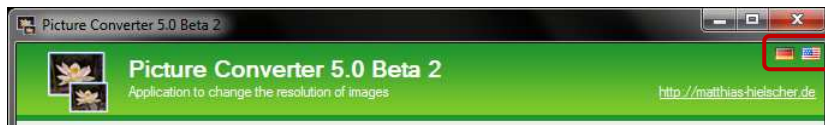


Picture Converter 5.0 Beta 2

General

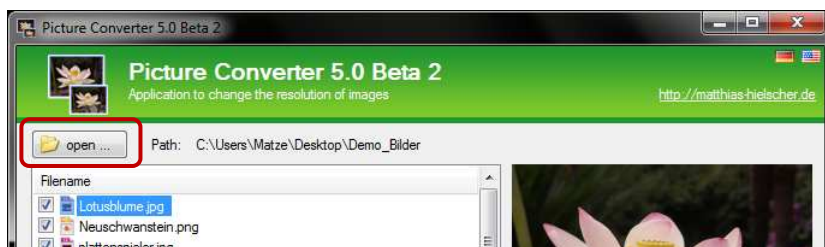
Language: The language of the user interface can be changed with the flag symbols.



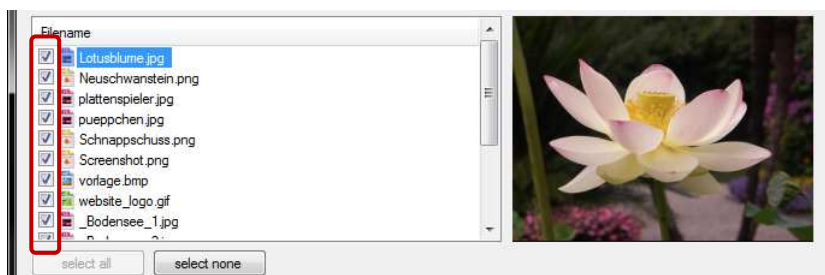
Program behavior: Some settings depend on other settings. Settings which can't be changed are disabled.

By closing the program the last chosen settings will be saved to restore them at the next start of the program.

Step 1: Select folder with the pictures to be converted



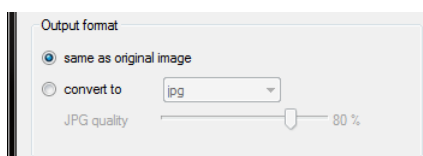
Step 2: Select pictures to be converted



All checked pictures will be converted.

A thumbnail will be shown when hovering a file with the mouse.

Step 3: Choose output format

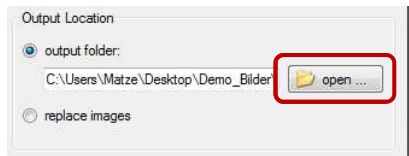


same as original image The type of the image (jpg, png, gif, bmp) will not be changed.

convert to Here you can set an output format.

When converting the picture to the jpg format, use the slider to set the target quality. 100 % is the best quality and biggest file size.

Step 4: Select output folder



output folder

Here you can set the folder where the converted images will be saved in. If the folder doesn't exist, it will be created. The original images will not be changed.

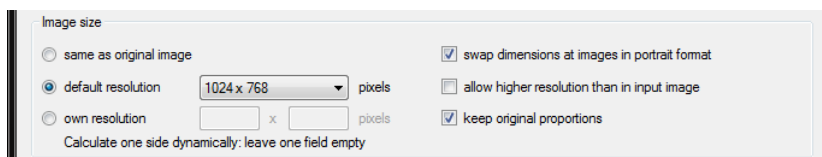
replace images

The original images will be replaced with the converted ones.

Warning:

The original images cannot be restored!

Step 5: Select the resolution



same as original image

The resolution will not be changed and corresponds to the one of the original image.

default resolution

Choose one of common resolutions.

own resolution

Here you can define an individual resolution.

If the width is given and the height should be calculated by using the original aspect ratio, type in the width in the left field and leave the right field empty.

If the height is given and the width should be calculated, leave the left field empty.

swap dimensions at images in portrait format

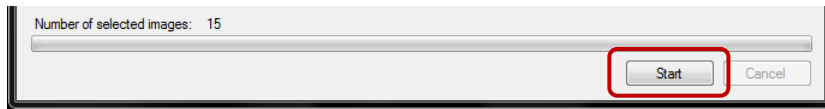
The values of a defined resolution will be swapped at an image in portrait format to get a converted portrait image, too.

allow higher resolution than in input image

If this option is not selected, pictures will not be scaled up.

keep original proportions

If this option is selected, the pictures will be resized to fit within the selected resolution using the original aspect ratio. If this option is not selected, pictures may be stretched to fit the selected resolution.

Step 6: Start conversion

Click on “Start” to start the conversion. To cancel the process, click “Cancel”. The progress bar will show the conversion progress.